

### TALK TO VISITORS ANY TIME ANY WHERE

#### NEW SOLO NX

Solo NX is an audio GSM "Door phone -to- Phone" unit allowing you to control visitors by calling you to your mobile and/or PSTN phones when visitors visit your home, office, holiday home or other premises so you can talk to them with INOX front plate.

The Solo unit also allows you to remotely open doors, gates and other access control devices by pressing a key combination on your mobile phone.

It is **ALL in ONE** and it is **very easy to install**.

All you need is to connect the power supply and insert the SIM card.



#### Features

- All in one
- Door phone -to- GSM/PSTN phone communication
- High quality audio
- Up to 5 users per call button
- Stainless steel finish
- Surface metal mounting housing
- Very easy and quick installation
- Easy access by free call (up to 100 CLIP numbers)
- Easy door release by using mobile phone
- 2 relay outputs
- 2 alarm outputs

#### Technical Specification

Power Supply	12 - 24V AC/DC
Current consumption - peak	2A
Current consumption - transmitting mode	250mA
Current consumption - idle mode	40mA
QUAD band GSM module (Cinterion)	850/900/1800/1900 MHz
Unit dimensions (S1 model)	156 x 116 x 61 (51) mm
External Antenna SMA	1

#### Included

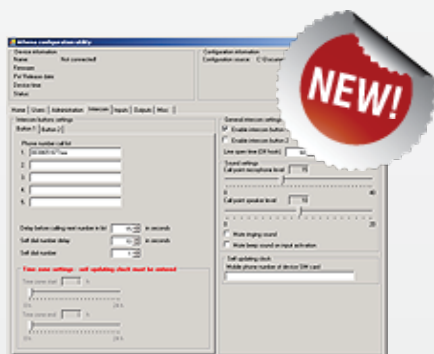


Outdoor GSM patch antenna



Ext. power supply  
230V AC/14,6V DC, 1,2Ah

#### Programming PC Software



#### Options

- S-Surface (standard) and F-Flush mounting
- 1 (standard), 2, 4, 6, 8 call buttons
- CL-Code lock
- Ordering code example: SOLO NX/S1 CL  
SOLO NX Surface with 1 button and Code Lock